

The Higgins Suite

Upper Ground Floor

Suite 1 & 2 Capacity

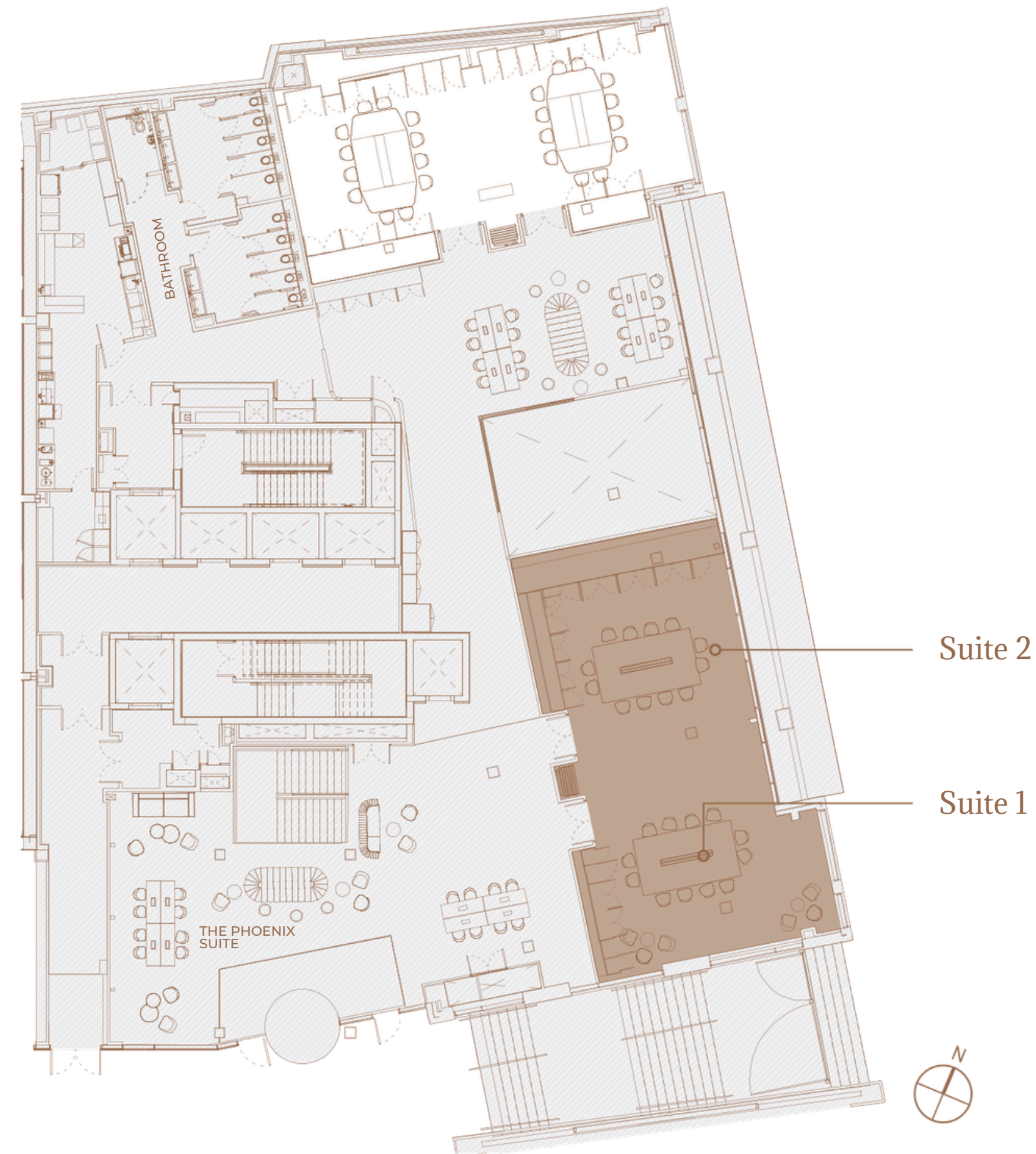
Theatre	144
Banquet 10/12	100/120
Classroom	84
Cabaret	72
Exhibition	100

Suite 1 Capacity

Theatre	80
Classroom	36
Cabaret	32
Exhibition	80
Banquet 10/12	50/60

Suite 2 Capacity

Theatre	80
Classroom	45
Cabaret	40
Exhibition	80
Banquet 10/12	50/60



The Higgins Suite, dedicated to our current President, can accommodate a variety of set up styles and enjoy natural daylight with views overlooking Dublin Castle.

Location: Upper ground floor

Size: 129 sq.m

Ceiling height: 3.2m

Dividable: Yes

Natural daylight: Yes

Screens & projectors: In-built

Air-conditioning: Yes

Free Wi-Fi: Yes

Pillars: Yes

Lobby: 277 sq.m / Breakout area

