

# The Douglas Hyde Suite

## Lower Ground Floor

### Suite 1 & 2 Capacity

Theatre	800
Banquet	550
Classroom	400
Cabaret	384
Exhibition	1000

### Suite 1 Capacity

Theatre	400
Banquet	270
Classroom	200
Cabaret	192
Exhibition	500

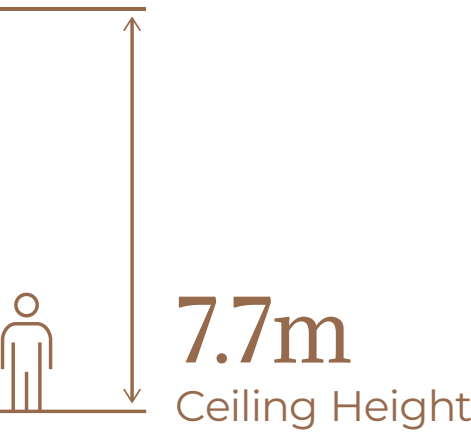
### Suite 2 Capacity

Theatre	400
Banquet	270
Classroom	200
Cabaret	192
Exhibition	500



Named after Ireland's first President, The Douglas Hyde Suite can be divided into two suites and has been purposefully designed with large scale conferences, exhibitions & events in mind.

- Location: Lower ground floor
- Size: 704 sq.m
- Ceiling height: 7.7m
- Dividable: Yes
- Natural Daylight: No
- Screens & projectors: In-built
- Air-conditioning: Yes
- Free Wi-Fi: Yes
- Pillars: No
- Lobby: 391 sq. m preconference



# The Robinson Suite

## Upper Ground Floor

### Suite 1 & 2 Capacity

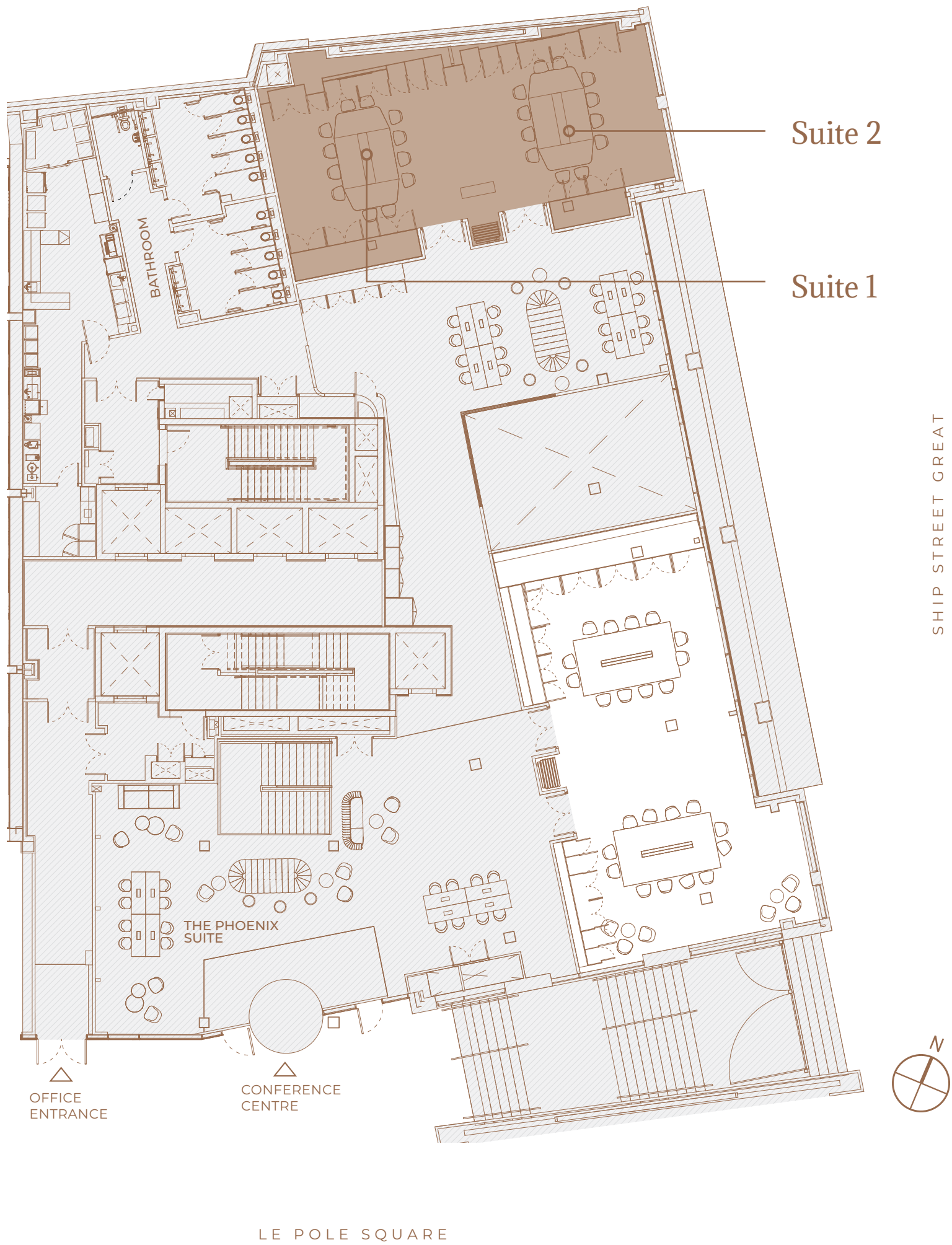
Theatre	110
Banquet	80
Classroom	72
Cabaret	64
Exhibition	110

### Suite 1 Capacity

Theatre	55
Classroom	36
Cabaret	32
Exhibition	55

### Suite 2 Capacity

Theatre	55
Classroom	36
Cabaret	32
Exhibition	55



The Robinson Suite is named after Ireland's first female President & former United Nations High Commissioner for Human Rights. This space offers flexible event set ups and also overlooks Ship Street & Dublin Castle.

- Location: Upper ground floor
- Size: 108 sq. m
- Ceiling height: 3.2 m
- Dividable: Yes
- Natural daylight: Yes
- Screens & projectors: In-built
- Air-conditioning: Yes
- Free Wi-Fi: Yes
- Pillars: No
- Lobby: 277 sq. m / Breakout area





# The Higgins Suite

## Upper Ground Floor

### Suite 1 & 2 Capacity

Theatre	160
Banquet	100
Classroom	90
Cabaret	80
Exhibition	100

### Suite 1 Capacity

Theatre	80
Classroom	45
Cabaret	40
Exhibition	80

### Suite 2 Capacity

Theatre	80
Classroom	45
Cabaret	40
Exhibition	80



The Higgins Suite, dedicated to our current President, can accommodate a variety of set up styles and enjoy natural daylight with views overlooking Dublin Castle.

- Location: Upper ground floor
- Size: 129 sq.m
- Ceiling height: 3.2m
- Dividable: Yes
- Natural daylight: Yes
- Screens & projectors: In-built
- Air-conditioning: Yes
- Free Wi-Fi: Yes
- Pillars: No
- Lobby: 277 sq.m / Breakout area



# Goldsmiths Hall (Hotel)

## Ground Floor

### Hall 1 Capacity

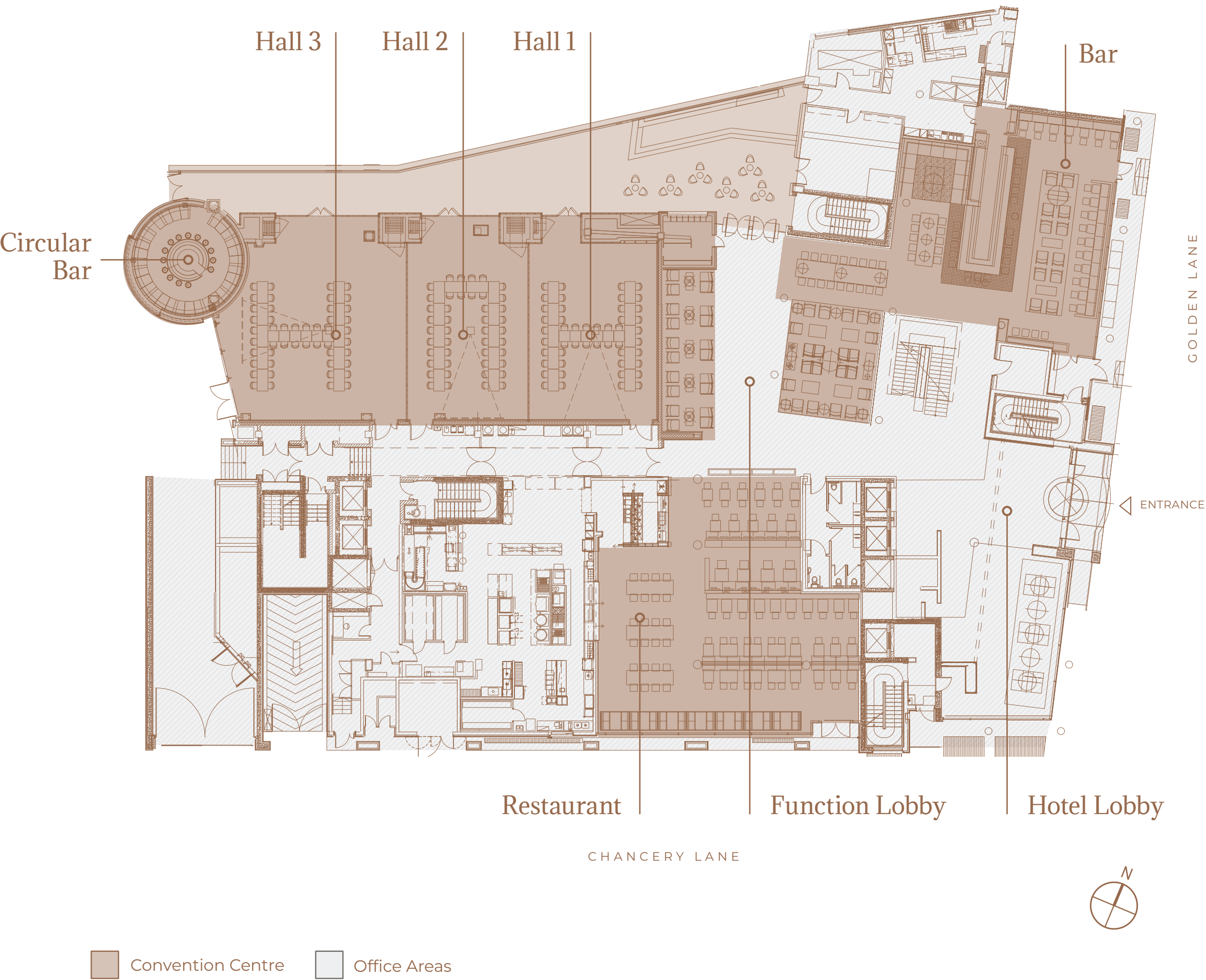
Theatre	112
Classroom	72
Banquet	80
Cabaret	42
Reception	110

### Hall 2 Capacity

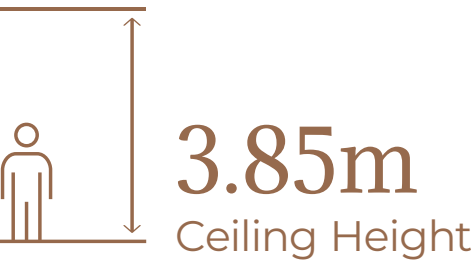
Theatre	112
Classroom	66
Banquet	80
Cabaret	42
Reception	110

### Hall 3 Capacity

Theatre	168
Classroom	90
Banquet	100
Cabaret	70
Reception	150



Location: Ground floor
Size: 1342 sq.m
Ceiling height: 3-3.85m
Lighting: Yes
Air-conditioning: Yes
Lobby: 160 sq. m preconference





# 1st Floor Meetings + Terrace (Hotel)

Swift 1 Capacity

Theatre	25
Classroom	20
Banquet	12
Cabaret	18
Reception	35

Swift 2 Capacity

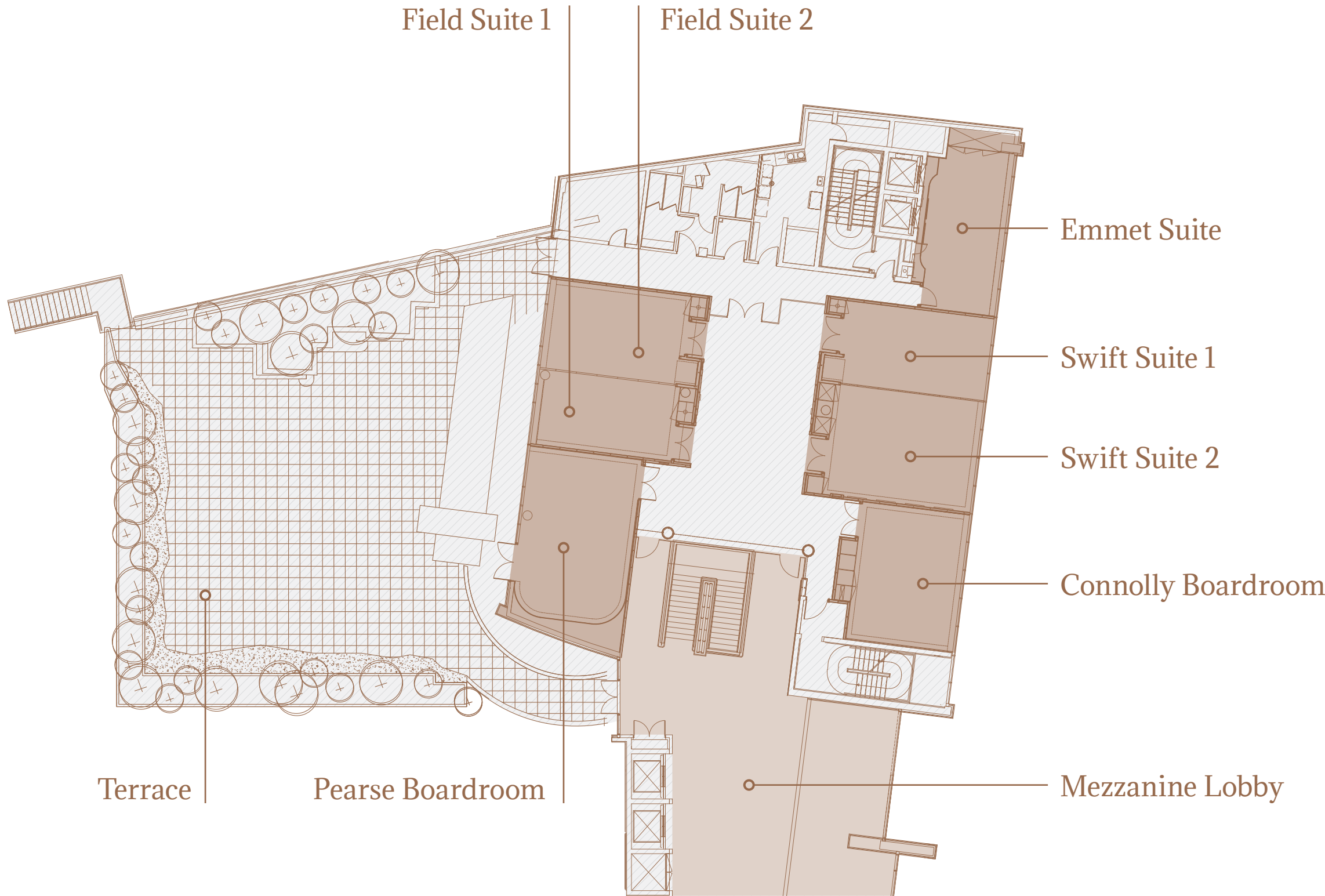
Theatre	50
Classroom	24
Banquet	32
Cabaret	24
Reception	50

Field 1 Capacity

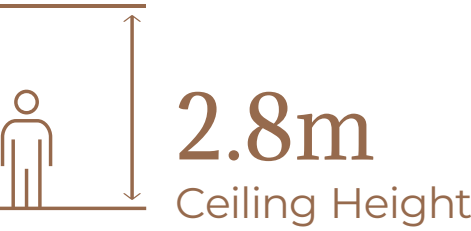
Theatre	30
Classroom	24
Banquet	12
Cabaret	18
Reception	35

Field 2 Capacity

Theatre	30
Classroom	24
Banquet	12
Cabaret	18
Reception	30



Location: First floor
Size: 413 sq.m
Ceiling height: 2.8m
Natural Daylight: Yes
Lighting: Yes
Air-conditioning: Yes



# Sky Suite (Hotel)

## Suite 1 Capacity

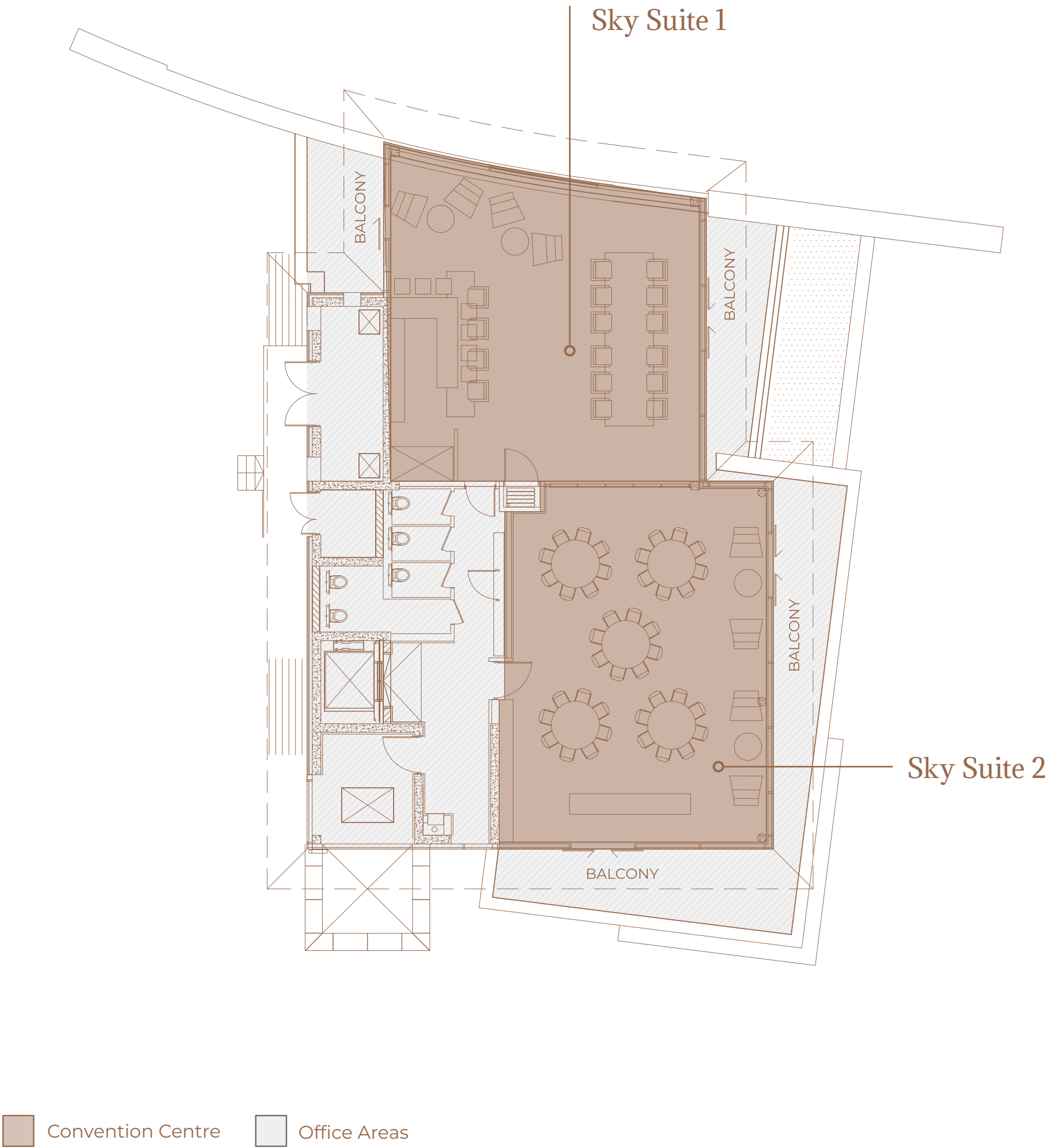
Boardroom	14
Reception	30

## Suite 2 Capacity

Boardroom	16
Reception	50

## Suite 1+2 Capacity

Theatre	50
Classroom	35
Banquet	40
Cabaret	28
Reception	30



Location: Seventh floor
Size: 223 sq.m
Ceiling height: 2.8-3m
Natural Daylight: Yes
Lighting: Yes
Air-conditioning: Yes

